




INDUSTRIAL REFRIGERATION

RECIRCULATOR PACKAGES

VA-350-1

PRP



 INDUSTRIAL REFRIGERATION

 R717 NH₃



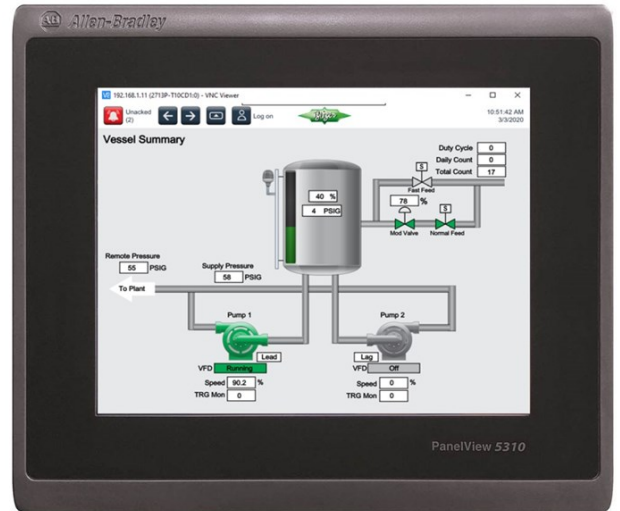
NEWLY DESIGNED RECIRCULATOR PACKAGES FOR INDUSTRIAL REFRIGERATION

BITZER is expanding its industrial refrigeration product and services offering with new, intelligent, simple to install & integrate, Pump Recirculator Package (PRP).

Food & beverage and cold storage facilities of today require more intuitive intelligence and energy efficiency than in the past.

With a product this is simple to integrate and maintain, PRPs give owners and operators full visibility and reliable control over their facility's critical refrigeration systems.

Equipment that operates in isolation, unable to share valuable operation data and integrate with a facility's existing control systems are no longer an option.



THE BITZER ADVANTAGE

- // Designed and built at our state of the art US Manufacturing site
- // CAD designed, factory built and tested
- // Dual refrigerant pumps utilize canned motors and provide redundancy and bearing health indication
- // Plug and play integration with VaCom Controls
- // All welder are certified in accordance with ASME Section IX

ACCESSORIES / OPTION

- // Liquid Makeup Assembly and Valve Station
 - Normal Fill vs. Fast Fill availability
- // Pump brand /style
- // Soft starters vs. VFD
- // Premium vs. budget control schemes

FEATURES AND SPECIFICATIONS

- // Suitable for use with Ammonia
- // Operating Range: -50°F to +40°F
- // Standard design pressure: 250 psi (Oil Pot 400 psi)
- // Vessels are per ASME Section VIII, Div 1
- // Package is per ASME B31.5 and IIAR 2
- // NEMA 3R Rated Control Box

INTELLIGENT CONTROLS BY VaCOM

- // VFD auto bypass for reliable operation
- // Intuitive, color touchscreen
- // Integrated data history, alarms, & trending
- // Pressure and Liquid Level Trending
- // Non proprietary and expandable PLCs

NOMENCLATURE

PRP-24120V			
Series	Diameter (in)	Length (in)	Orientation
PRP	24 .. 96	120 .. 216	H = Horizontal V = Vertical

NOMINAL CAPACITIES AND DIMENSIONS

The following tables provides nominal capacities the PRPs will provide with approximate dimensions. Also provided are available pumps that will be selected to tailor your PRP for you application and system.

Please consult sales for sizing, selection, and additional information as needed. (Full Catalog to be released at later date) .


Vertical Recirculator Assemblies									
Model	Evap Temp: +20F Liq Temp: 95F		Evap Temp: -20F Liq Temp: 95F		Evap Temp: -40F Liq Temp: +20F		Height	Width	Length
	TR	GPM	TR	GPM	TR	GPM	in	in	in
PRP-24120V	126.1	25.3	76.8	14.0	68.4	11.9	186	51	76
PRP-30132V	199.6	40.1	121.5	22.1	108.2	18.9	198	67	80
PRP-36144V	289.9	58.2	176.5	32.1	157.2	27.4	210	74	84
PRP-42144V	397.0	79.7	241.6	44.0	215.2	37.6	210	69	87
PRP-48156V	520.9	104.6	317.0	57.8	282.4	49.3	222	72	90
PRP-54156V	655.4	131.6	398.9	72.7	355.3	62.0	222	75	94
PRP-60156V	812.2	163.1	494.3	90.1	440.3	76.8	222	77	97
PRP-72168V	1167.9	234.5	710.8	129.5	633.1	110.5	234	85	115
PRP-84192V	1588.1	318.9	966.5	176.1	860.9	150.2	258	98	131
PRP-96216V	2083.7	418.4	1268.2	231.1	1129.6	197.1	282	107	133

Horizontal Recirculator Assemblies									
Model	Evap Temp: +20F Liq Temp: 95F		Evap Temp: -20F Liq Temp: 95F		Evap Temp: -40F Liq Temp: +20F		Height	Width	Length
	TR	GPM	TR	GPM	TR	GPM	in	in	in
PRP-24120H	114.2	22.9	69.5	12.7	61.9	10.8	90	59	59
PRP-30132H	187.7	37.7	114.3	20.8	101.8	17.8	96	59	59
PRP-36144H	275.7	55.4	167.8	30.6	149.4	26.1	102	59	59
PRP-42144H	376.2	75.5	229.0	41.7	204.0	35.6	108	61	60
PRP-48156H	491.2	98.6	299.0	54.5	266.3	46.5	114	63	60
PRP-54156H	625.7	125.6	380.8	69.4	339.2	59.2	120	68	60
PRP-60156H	760.9	152.8	463.1	84.4	412.5	72.0	126	69	70
PRP-72168H	1116.6	224.2	679.6	123.8	605.3	105.6	138	85	81
PRP-84192H	1518.2	304.9	924.0	168.4	823.0	143.6	150	91	81
PRP-96216H	1992.4	400.1	1212.6	220.9	1080.1	188.5	162	92	94

Note: All GPMs caculated using 3:1 Recirculation Rate.

PUMPS

Canned Motor Pumps								
GPM	Spare Part No.	35 PSID			45 PSID			
		HP	FLA	Min Flow GPM	HP	FLA	Min Flow	
60	C1004334	2.9	4.7	8	C1004336	4.5	6.8	13
120	C1004349	5.2	8.0	13	C1004339	8.3	12.0	21
190	C1004338	8.3	12.0	40	C1004342	13.4	24.0	53
270	C1004343	11.3	19.0	40	C1004344	20.0	32.0	66
375	C1004345	14.7	26.0	66	C1004346	22.7	35.0	66
480	C1004347	20.0	32.0	66	C1004348	22.7	35.0	66



4080 Enterprise Way
Flowery Branch, GA 30542
Phone: 770-503-9226
Fax: 770-503-9440
Email: sales@bitzerus.com

1.888.GO BITZER (1.888.462.4893)

21125 Daoust Street
Sainte-Anne-De-Bellevue, Quebec, Canada
H9X 0A3
Phone: 514-697-3363
Fax: 514-697-9768
www.bitzer.ca

Av. Adolfo López Mateos 221, Bodega 9, Col. Victoria
67110 Guadalupe, N.L., Mexico
Phone: +52 [81] 1522 4500
Fax: +52 [81] 1522 4505
www.bitzermexico.com

colombia@bitzerus.com
ecuador@bitzerus.com
puertorico@bitzerus.com
caribe@bitzerus.com
centroamerica@bitzerus.com
venezuela@bitzerus.com
www.bitzerus.com