



Technical Bulletin (TB-0058)

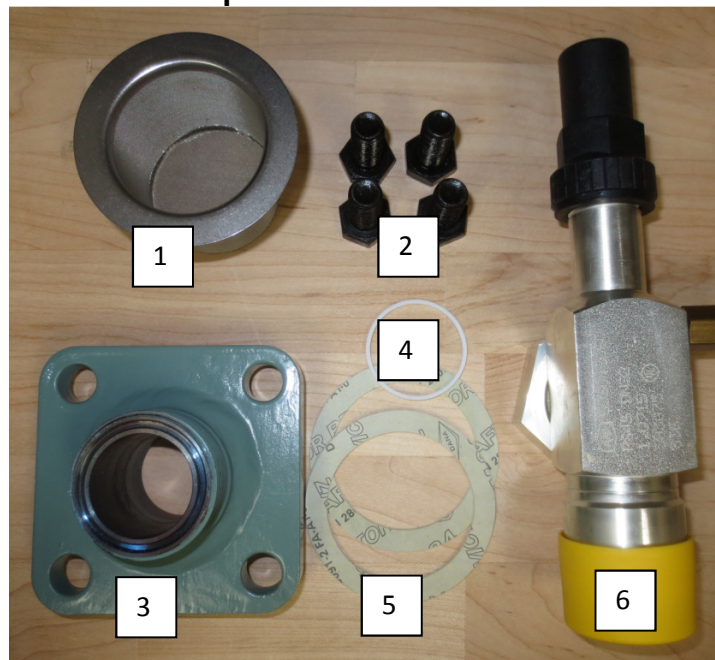
Service Valve Retrofit kit for CE4 Compressor

Version #1, Sept 2016

Service valve Kit from DN40 valve to D35 Rotalock on CE4 compressor.

The purpose of this document is to show the retrofit service valve on the 4NE-14 and 4NE-20 compressor from the DN40 valve to a rotalock style valve. This will allow the location of the service valve in a 360° rotation.

Adapter Kit P# 999-0007-02



Items in kit

- 1 – (1) 362001-08 Suction strainer
- 2 – (4) 380157-02 M12 x 30 bolts
- 3 – (1) 405-0028-02 Adapter plate
- 4 – (1) 372200-04 1-3/4 -12 Joint ring
- 5 – (2) 372301-02 DN32-40 Valve gaskets
- 6 – (1) 361321-08 1 3/8 D35 Rotalock valve

Replacing the Valve

1- Remove the existing DN40 4-bolt service valve. See Fig 2

Fig 2:



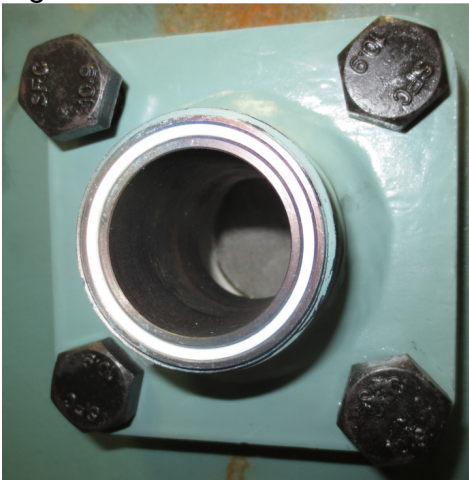
2- Install the suction strainer 362001-08 with 2 372301-02 gaskets. See Fig 3

Fig 3:



3 -Install the adapter plate with the 4 – M12 bolts and also install the 372200-04 joint ring gasket. Torque the M12 bolts to 59 lbs/ft (80 Nm). See Fig 4

Fig 4:



4 - Install the rotalock service valve in the position required and torque to 77 lbs/ft. See Fig 5

Fig 5:

