



TECHNICAL BULLETIN

BOLETIN TECNICA

TB-0057-01
Oct-16

Oil Drain Valve for BE5/BE6 Compressors

- 361903-01

Content

- 1 Safety
- 2 Required Tools
- 3 Hardware
- 4 Installation

The installation of the optional oil drain valve facilitates servicing of the BE5 and BE6 series compressors. This valve, which is installed on the side of the compressor, aides in the charging and draining of oil from the compressor.

Authorized Personnel

All work on the compressor and refrigeration systems shall be carried out only by refrigeration personnel which have been trained and instructed in all work. The qualification and expert knowledge of the refrigeration personnel corresponds to the respectively valid guidelines.

Válvula de drenaje de aceite para compresores serie BE5/BE6

- 361903-01

Content

- 1 Seguridad
- 2 Herramientas
- 3 Hardware
- 4 Instalación

The installation of the optional oil drain valve facilitates servicing of the BE5 and BE6 series compressors. This valve, which is installed on the side of the compressor, aides in the charging and draining of oil from the compressor.

Personal Autorizado

All work on the compressor and refrigeration systems shall be carried out only by refrigeration personnel which have been trained and instructed in all work. The qualification and expert knowledge of the refrigeration personnel corresponds to the respectively valid guidelines.



1 Safety

This Technical Information describes the mounting of the oil drain valve.

For further information and safety instructions for the compressor refer to the operating instructions.

WARNING!

The compressor is under pressure with a holding charge or a refrigerant charge above atmospheric pressure. Incorrect handling may cause injury to skin and eyes. Wear safety glasses while working on the compressor. Release the pressure in the compressor prior to installing the oil drain valve.

2 Required Tools

- 7/8" (22mm) Open End Wrench
- 1" (24mm) Open End Wrench
- Torque Wrench

3 Hardware

Oil Drain Valve - p/n 361903-01

- Includes the dip tube, the service valve and the service valve gasket (not shown)



1 Seguridad

Esta información técnica describe el montaje de la válvula de drenaje de aceite.

Para más información e instrucciones de seguridad para el compresor consulte el manual de instrucciones.

¡ATENCIÓN!

El compresor se encuentra bajo presión con una carga de retención o una carga de refrigerante superior a la presión atmosférica. El manejo incorrecto puede causar lesiones en la piel y los ojos. Use gafas de seguridad mientras se trabaja en el compresor. Liberar la presión en el compresor antes de instalar la válvula de drenaje de aceite.

2 Herramientas

- Llave combinada 7/8" (22mm)
- Llave combinada 1" (24mm)
- Llave de torque ajustable

3 Hardware

Válvula de drenaje - p/n 361903-01

- Incluye el tubo de inmersión, la válvula de servicio y la junta de válvula de servicio (no mostrado)

4 Installation

WARNING!

The compressor is under pressure with a holding charge or a refrigerant charge above atmospheric pressure. Release the pressure in the compressor prior to installing the oil drain valve.

- Remove the bottom pipe plug on the side of the compressor (1/2"-14 NPTF)
- Insert the dip tube into the compressor and tighten to 51 lbf/ft. The dip tube will rest at an angle on the bottom of the compressor.
- Be sure the nylon O-ring is on the dip tube before installing the valve. Install the service valve onto the dip tube and tighten to X lbf/ft.
- Be sure the valve stem is front seated before operating the compressor.

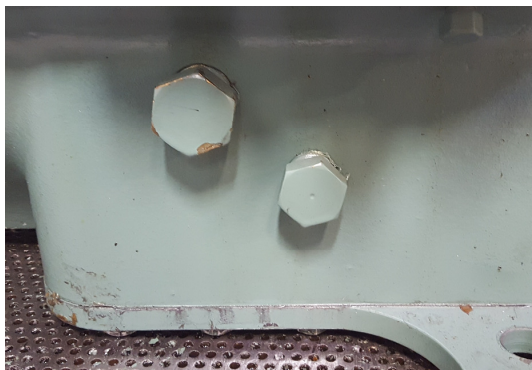


Figure 1



Figure 3

4 Instalación

¡ATENCIÓN!

El compresor se encuentra bajo presión con una carga de retención o una carga de refrigerante superior a la presión atmosférica. Liberar la presión en el compresor antes de instalar la válvula de drenaje de aceite.

- Remove the bottom pipe plug on the side of the compressor (1/2"-14 NPTF)
- Insert the dip tube into the compressor and tighten to 51 lbf/ft. The dip tube will rest at an angle on the bottom of the compressor.
- Be sure the nylon O-ring is on the dip tube before installing the valve. Install the service valve onto the dip tube and tighten to X lbf/ft.
- Be sure the valve stem is front seated before operating the compressor.



Figure 2



Figure 4



BITZER US, Inc.
4080 Enterprise Way
Flowery Branch, GA 30542
Phone: 770-503-2900
sales@bitzerus.com // bitzerus.com