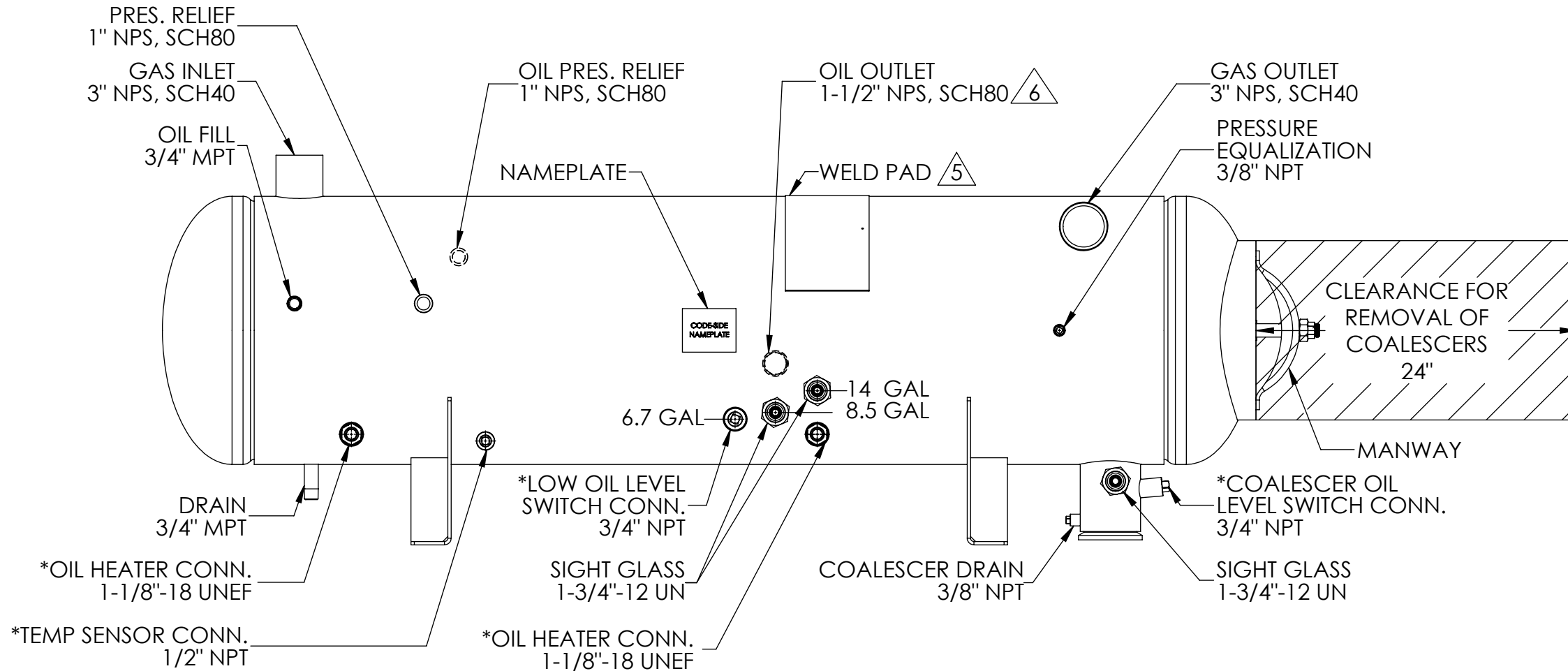
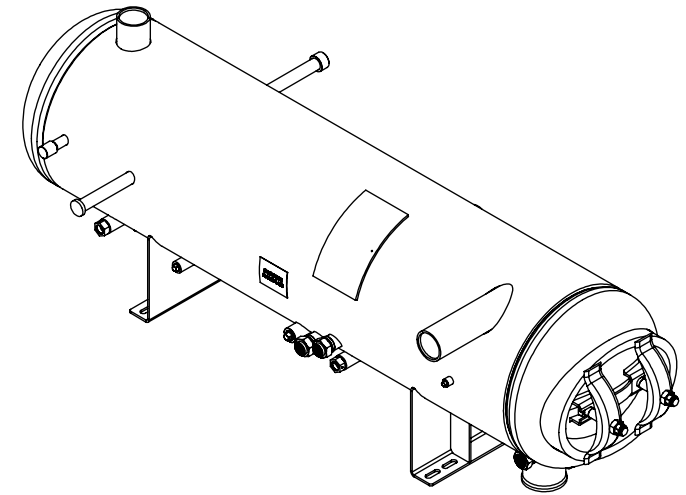


1. Shell Side:
- Max. Allowable Work Pressure: 300psi @ 250F
 - Min. Design Metal Temp.: -20F @ 300psi
 - Capacity: 13.09 ft3
 - Type of Fluid (Non-lethal): ANHYDROUS NH3 / OIL
 - Physical State of Fluid: LIQUID / VAPOR
 - Corrosion Allowance: 0
 - Vessel Stamp: U

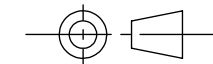
2. Manufacture vessel in accordance with ASME Sec VIII Div. 1 (Latest Version)
3. Pressure boundary parts are carbon steel
4. All connections will be shipped with welded caps and plugs
5. Vessel will be painted black
6. Customer must remove all welded caps prior to pressurizing system with the exception of socket welded caps



(*) ACCESSORY - ORDER SEPARATELY	ACCESSORY P/N	QTY.
OIL LEVEL SWITCH - 24V, AC/DC	347949-04	2
OIL LEVEL PRISM	C1004713	2
OIL LEVEL HEATER - 120V, 200W OPTION	343213-08	2
OIL LEVEL HEATER - 230V, 200W OPTION	343213-07	2
TEMPERATUR SENSOR THERMOWELL	C1000704	1
SPARE PARTS	SPARE PARTS P/N	QTY.
COALESCER	P000003477	2
HEATER WELL	345905-05	2
O-RING - HEATER TO HEATER WELL	372021-14	2
O-RING - HEATER WELL TO COUPLING	372021-20	2
SET SCREWS - HEATER WELL	380354-08	4
MANWAY GASKET	P000014995	1
MANWAY LOCKNUT	P000011380	2
SIGHT GLASS	182102200	3
SIGHT GLASS NUT	182102015	3
O-RING - SIGHT GLASS ROTALOCK SEAL	372200-04	3

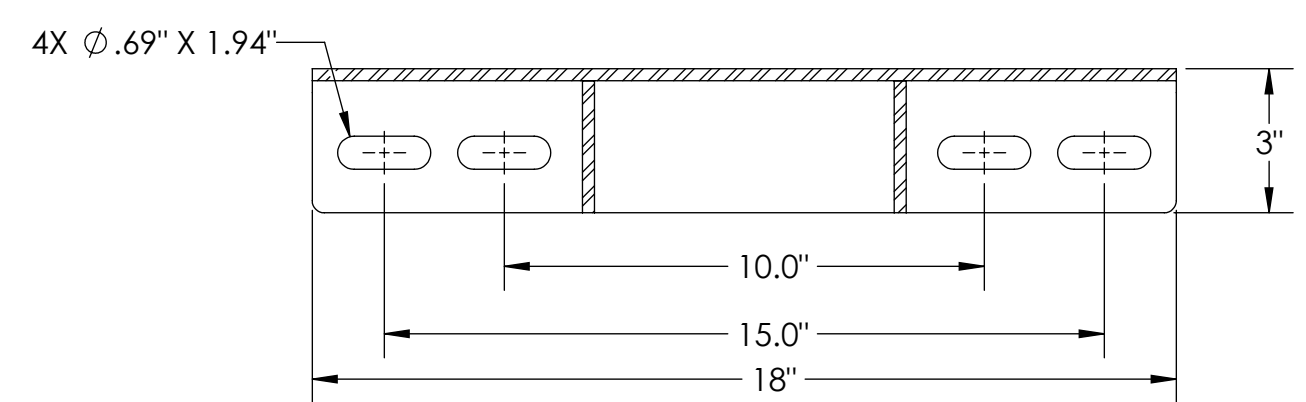
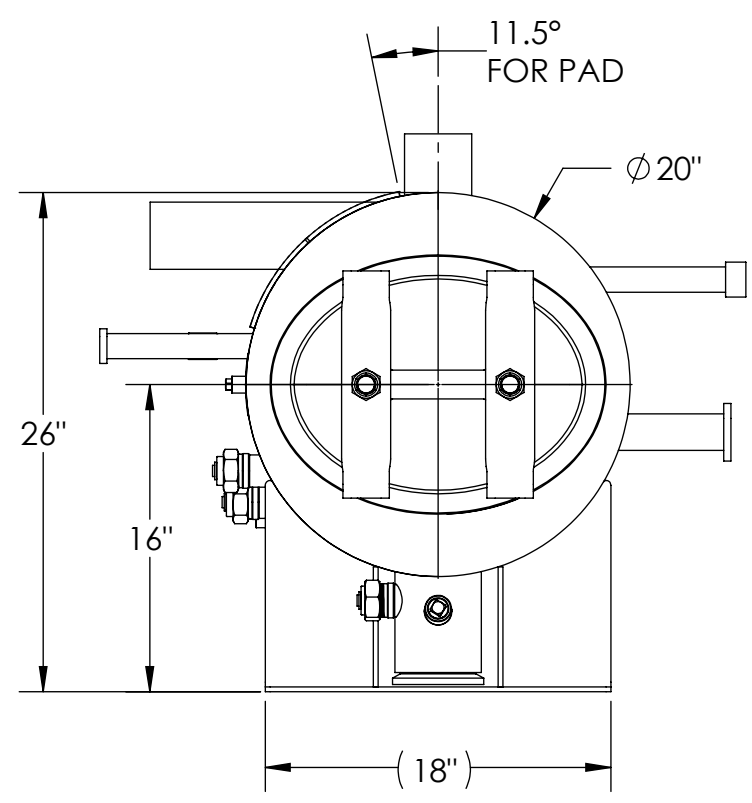
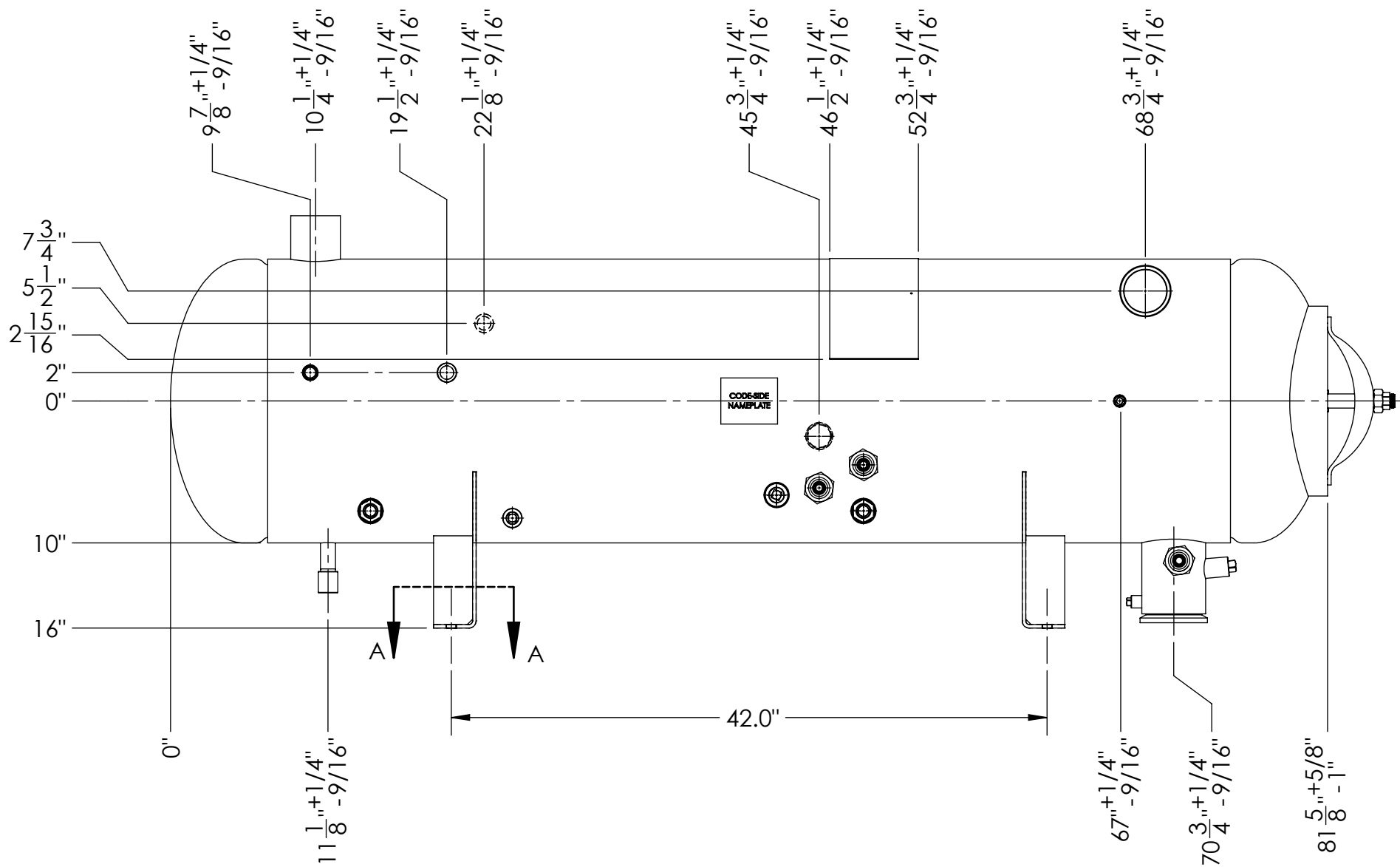
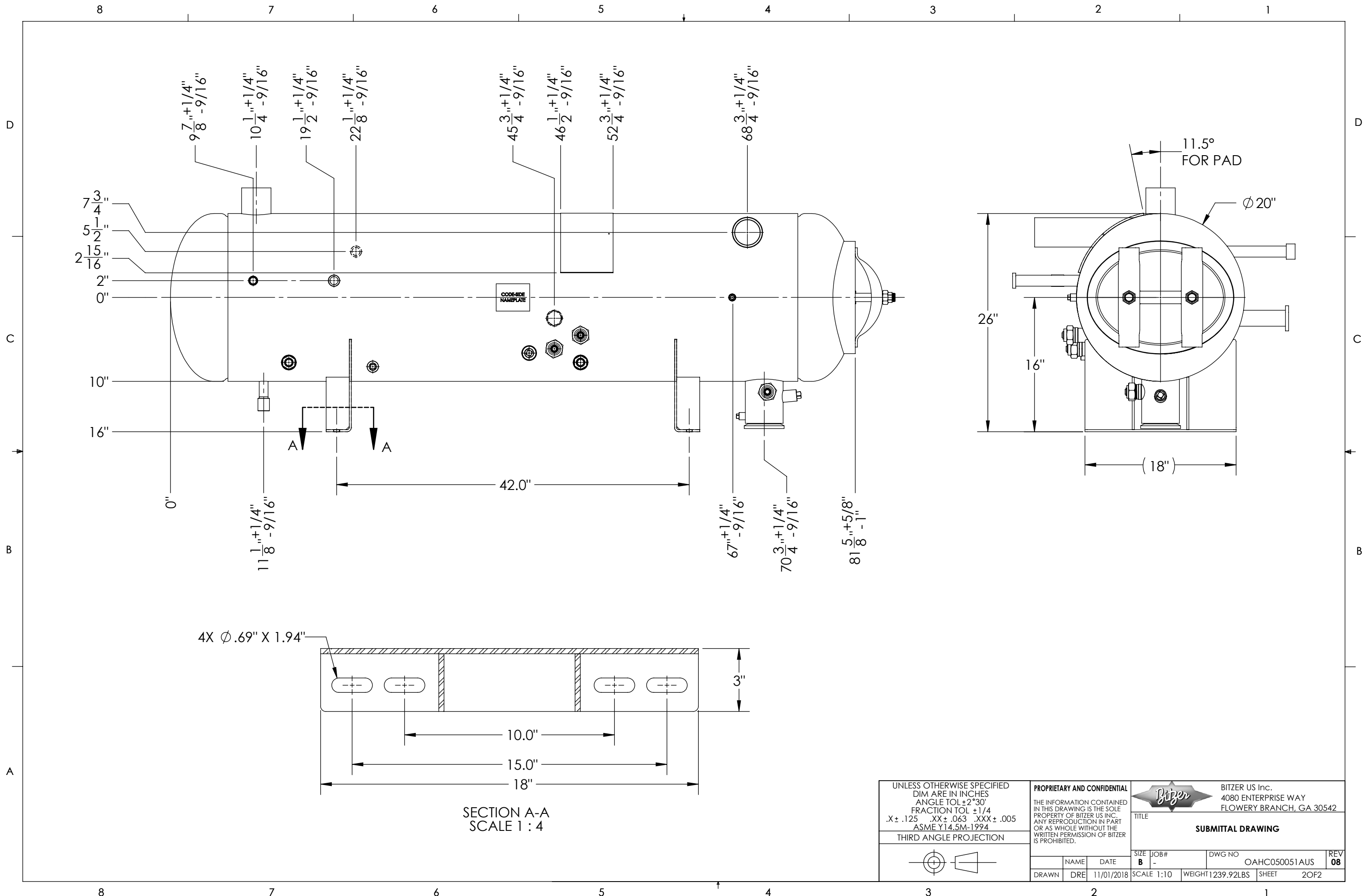
REVISION HISTORY				
REV	DESCRIPTION	DATE	DRWBY	APPVBY
08	UPDATE GASKET WITH P14995 - ADD SOCKET WELD CAP	03/10/2023	EGL	AHB
07	OAL DIM ADDED	01/22/2021	AB	AB
06	CHANGE OIL OUTLET TO 1.5"NPS	02/17/2020	AC	AC
05	ADD PAD. MOVE SG & OIL LEVEL SWITCH CONN.	02/11/2020	AC	AC
04	CHANGE COUPLING ROTATION	01/28/2019	DE	DE
03	CHANGES PER EC173-19	01/24/2019	DE	DE

UNLESS OTHERWISE SPECIFIED
DIM ARE IN INCHES
ANGLE TOL ± 2°30'
FRACTION TOL ± 1/4
.X ± .125 .XX ± .063 .XXX ± .005
ASME Y14.5M-1994


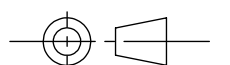


PROPRIETARY AND CONFIDENTIAL
THE INFORMATION CONTAINED
IN THIS DRAWING IS THE SOLE
PROPERTY OF BITZER US INC.
ANY REPRODUCTION IN PART
OR AS WHOLE WITHOUT THE
WRITTEN PERMISSION OF BITZER
IS PROHIBITED.

		BITZER US Inc. 4080 ENTERPRISE WAY FLOWERY BRANCH, GA 30542	
TITLE			
SUBMITTAL DRAWING			
SIZE	JOB#	DWG NO	REV
B	-	OAH050051AUS	08
DRAWN	DRE	DATE	SCALE
		11/01/2018	1:10
WEIGHT		SHEET	
1239.92LBS		1 OF 2	

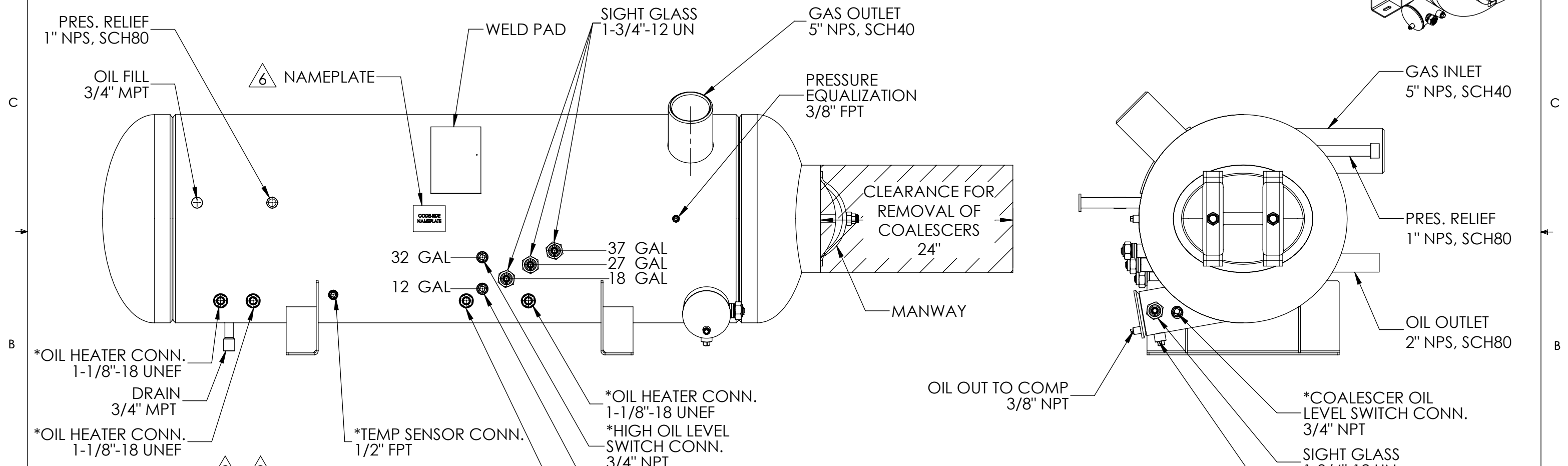


SECTION A-A
SCALE 1 : 4

UNLESS OTHERWISE SPECIFIED DIM ARE IN INCHES ANGLE TOL $\pm 2^\circ 30'$ FRACTION TOL $\pm 1/4$.X $\pm .125$.XX $\pm .063$.XXX $\pm .005$ ASME Y14.5M-1994		PROPRIETARY AND CONFIDENTIAL THE INFORMATION CONTAINED IN THIS DRAWING IS THE SOLE PROPERTY OF BITZER US INC. ANY REPRODUCTION IN PART OR AS WHOLE WITHOUT THE WRITTEN PERMISSION OF BITZER IS PROHIBITED.		 BITZER US Inc. 4080 ENTERPRISE WAY FLOWERY BRANCH, GA 30542	
THIRD ANGLE PROJECTION		TITLE SUBMITTAL DRAWING		SIZE JOB# B -	
		DWG NO OAH050051AUS		REV 08	
DRAWN	DRE	DATE	SCALE	WEIGHT	SHEET
		11/01/2018	1:10	1239.92LBS	2 OF 2

- Shell Side:
 - Max. Allowable Work Pressure: 300psi @ 250F
 - Min. Design Metal Temp.: -20F @ 300psi
 - Capacity: 24.05 ft³
 - Type of Fluid (Non-lethal): ANHYDROUS NH₃ / OIL
 - Physical State of Fluid: LIQUID / VAPOR
 - Corrosion Allowance: 0
 - Vessel Stamp: U

- Manufacture vessel in accordance with ASME Sec VIII Div. 1 (Latest Version)
- Pressure boundary parts are carbon steel.
- All connections will be shipped with welded caps and plugs.
- Vessel will be painted black.
- Customer must remove all welded caps prior to pressurizing system with the exception of socket welded caps



(*) ACCESSORY - ORDER SEPARATELY	ACCESSORY P/N	QTY.
OIL LEVEL SWITCH - 24V, AC/DC	347949-04	3
OIL LEVEL SWITCH PRISM	C1004713	3
OIL LEVEL HEATER - 120V, 200W OPTION	343213-08	4
OIL LEVEL HEATER - 230V, 200W OPTION	343213-07	4
TEMPERATUR SENSOR THERMOWELL	C1000704	1
SPARE PARTS	SPARE PARTS P/N	QTY.
COALESCER	P000003477	4
HEATER WELL	345905-05	4
O-RING - HEATER TO HEATER WELL	372021-14	4
O-RING - HEATER WELL TO COUPLING	372021-20	4
SET SCREWS - HEATER WELL	380354-08	8
MANWAY GASKET	P000014995	1
MANWAY LOCKNUT	P000011380	2
SIGHT GLASS	182102200	4
SIGHT GLASS NUT	182102015	4
O-RING - SIGHT GLASS ROTALOCK SEAL	372200-04	4

REVISION HISTORY				
REV	DESCRIPTION	DATE	DRWBY	APPVBY
10	ADD SOCKET WELD CAP AND GENERAL UPDATES	08/31/2023	ITV	AHB
09	UPDATED GASKET PART NUMBER	12/08/2022	EGL	AHB
08	UPDATED ACCESSORY PART LIST	05/25/2022	AHB	AHB
07	INCREASED EXTERNAL PROJ. OF MANWAY	06/05/2020	AB	AB
06	REMOVE NAMEPLATE BRACKET	09/16/2019	AC	AC
05	ADD NOTE 8	06/13/2019	DRE	DRE

UNLESS OTHERWISE SPECIFIED DIM ARE IN INCHES ANGLE TOL ±2°30' FRACTION TOL ±1/4 .X ± .125 .XX ± .063 .XXX ± .005 ASME Y14.5M-1994

THIRD ANGLE PROJECTION

PROPRIETARY AND CONFIDENTIAL

THE INFORMATION CONTAINED IN THIS DRAWING IS THE SOLE PROPERTY OF BITZER US INC. ANY REPRODUCTION IN PART OR AS WHOLE WITHOUT THE WRITTEN PERMISSION OF BITZER IS PROHIBITED.

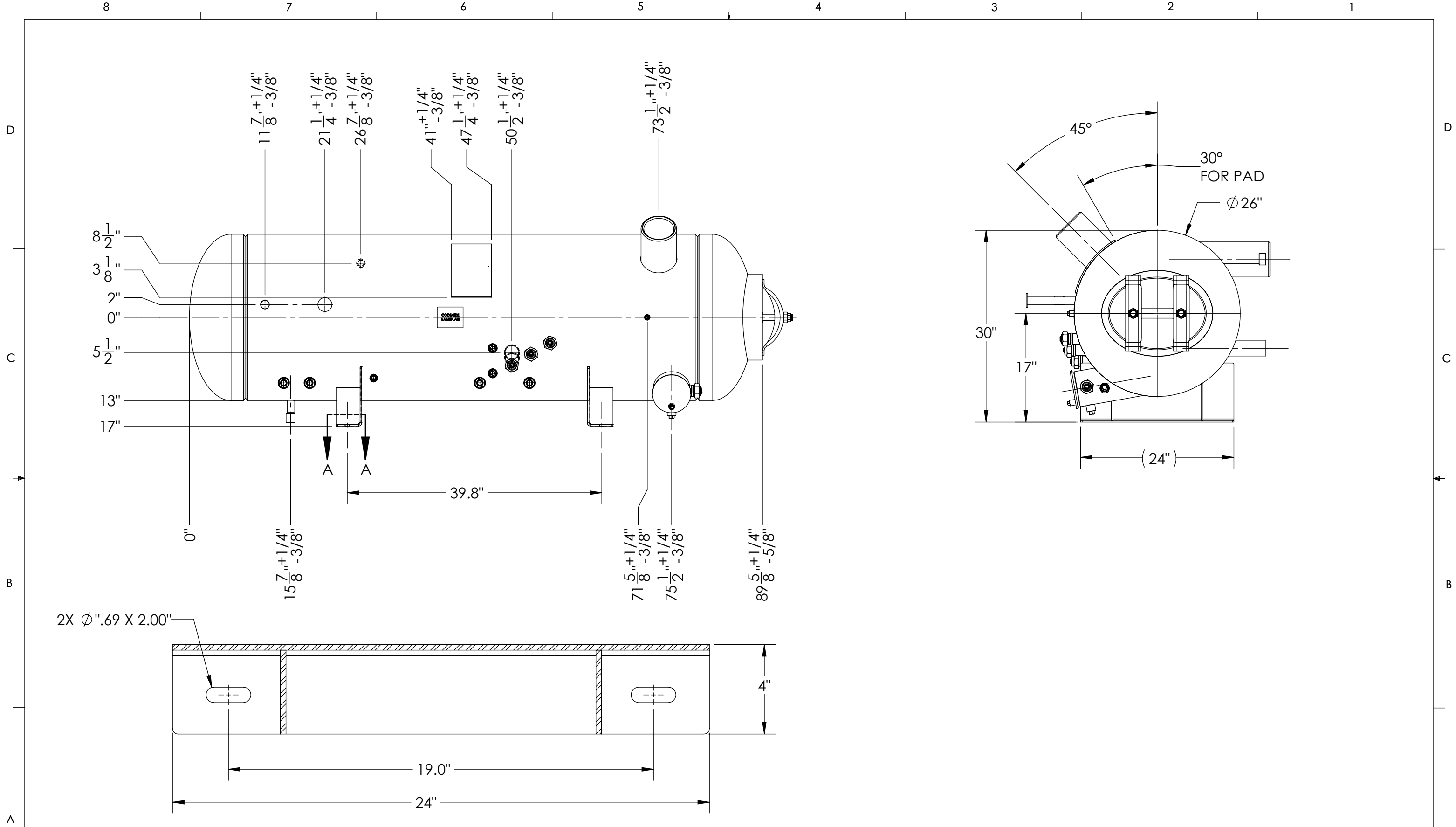
BITZER US Inc.
4080 ENTERPRISE WAY
FLOWERY BRANCH, GA 30542

BITZER


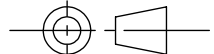
TITLE: **SUBMITTAL DRAWING**

SIZE	JOB#	DWG NO	REV
B	Pressure Vessels	OAH06501AUS-Z2	10

SCALE 1:12 WEIGHT 1966.51LBS SHEET 1 OF 2

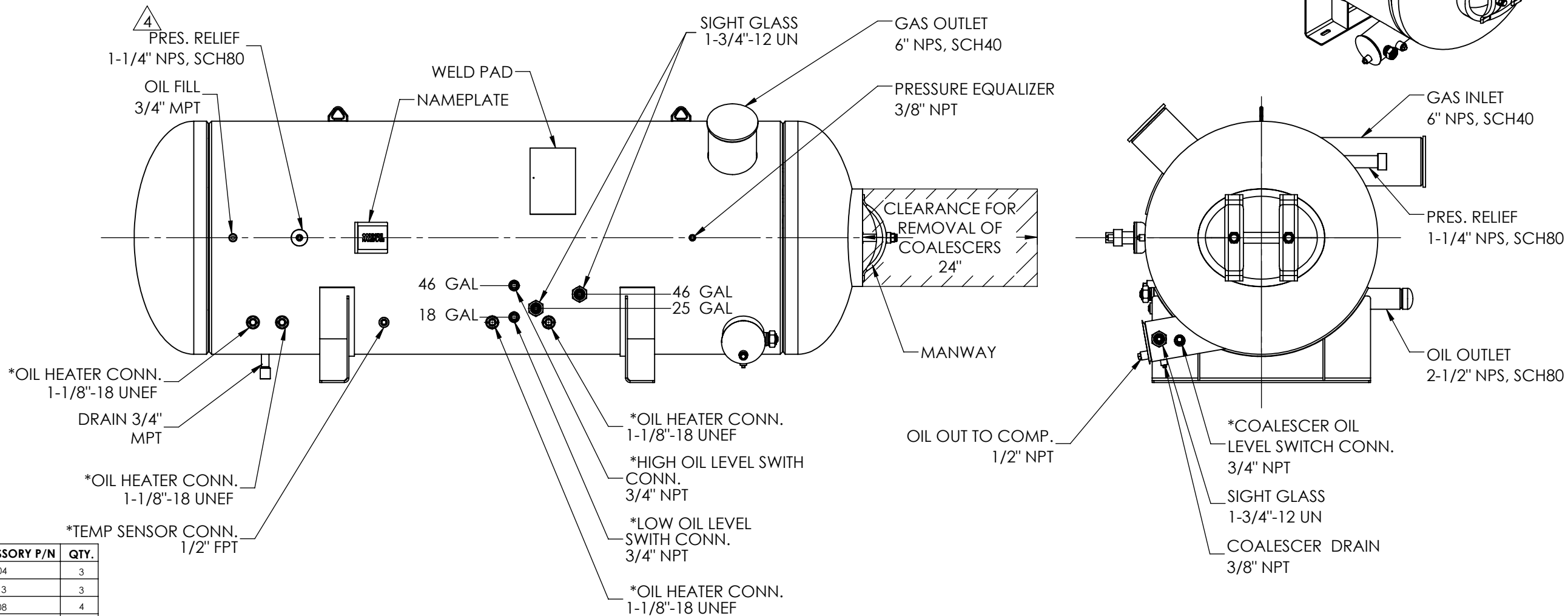
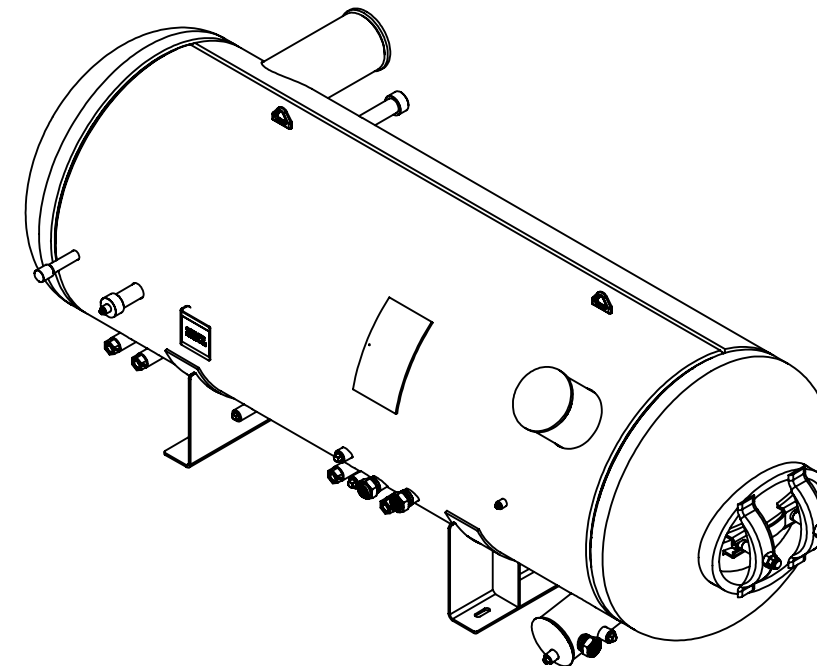


SECTION A-A
SCALE 1 : 4

UNLESS OTHERWISE SPECIFIED DIM ARE IN INCHES ANGLE TOL $\pm 2^\circ 30'$ FRACTION TOL $\pm 1/4$.X $\pm .125$.XX $\pm .063$.XXX $\pm .005$ ASME Y14.5M-1994		PROPRIETARY AND CONFIDENTIAL THE INFORMATION CONTAINED IN THIS DRAWING IS THE SOLE PROPERTY OF BITZER US INC. ANY REPRODUCTION IN PART OR AS WHOLE WITHOUT THE WRITTEN PERMISSION OF BITZER IS PROHIBITED.		 BITZER US Inc. 4080 ENTERPRISE WAY FLOWERY BRANCH, GA 30542	
THIRD ANGLE PROJECTION		TITLE SUBMITTAL DRAWING			
		SIZE B	JOB# Pressure Vessels	DWG NO OAH06501AUS-Z2	REV 10
DRAWN	DRE	04/24/2017	SCALE 1:14	WEIGHT 1966.51LBS	SHEET 2 OF 2

1. Shell Side:
- Max. Allowable Work Pressure: 300psi @ 250F
 - Min. Design Metal Temp.: -20F @ 300psi
 - Capacity: 41.45 ft³
 - Type of Fluid (Non-lethal): ANHYDROUS NH₃ / OIL
 - Physical State of Fluid: LIQUID / VAPOR
 - Corrosion Allowance: 0
 - Vessel Stamp: U

2. Manufacture vessel in accordance with ASME Sec VIII Div. 1 (Latest Version)
 Pressure boundary parts are carbon steel.
 4. All connections will be shipped with welded caps and plugs.
 5. Vessel will be painted black.
 6. Customer must remove all welded caps prior to pressurizing system, unless noted otherwise.



(*) ACCESSORY - ORDER SEPARATELY	ACCESSORY P/N	QTY.
OIL LEVEL SWITCH - 24V, AC/DC	347949-04	3
OIL LEVEL SWITCH PRISM	C1004713	3
OIL LEVEL HEATER - 120V, 200W OPTION	343213-08	4
OIL LEVEL HEATER - 230V, 200W OPTION	343213-07	4
TEMPERATUR SENSOR THERMOWELL	C1000704	1
SPARE PARTS	SPARE PARTS P/N	QTY.
COALESCER	P000006638	4
HEATER WELL	345905-05	4
O-RING - HEATER TO HEATER WELL	372021-14	4
O-RING - HEATER WELL TO COUPLING	372021-20	4
SET SCREWS - HEATER WELL	380354-08	8
MANWAY GASKET	P000014995	1
MANWAY LOCKNUT	P000011380	2
SIGHT GLASS	182102200	3
SIGHT GLASS NUT	182102015	3
O-RING - SIGHT GLASS ROTALOCK SEAL	372200-04	3

REVISION HISTORY				
REV	DESCRIPTION	DATE	DRWBY	APPVBY
05	ADD OPTION TABLE TO SUBMITTAL DRAWING	09/07/2023	DET	AHB
04	UPDATE NOTE 7 PART NUMBER	07/26/2022	IVS	DE
03	MOVE PAD 4" TO THE RIGHT	06/17/2019	DE	DE
02	ADD NOTE 7	06/13/2019	DE	DE
01	MOVE OIL DRAIN 3", LONGER NIPPLE FOR OIL FIELD	04/10/2019	AC	AC
00	INITIAL RELEASE	04/09/2019	AC	AC

UNLESS OTHERWISE SPECIFIED
 DIM ARE IN INCHES
 ANGLE TOL ± 2°30'
 FRACTION TOL ± 1/4
 .X ± .125 .XX ± .063 .XXX ± .005
 ASME Y14.5M-1994

THIRD ANGLE PROJECTION

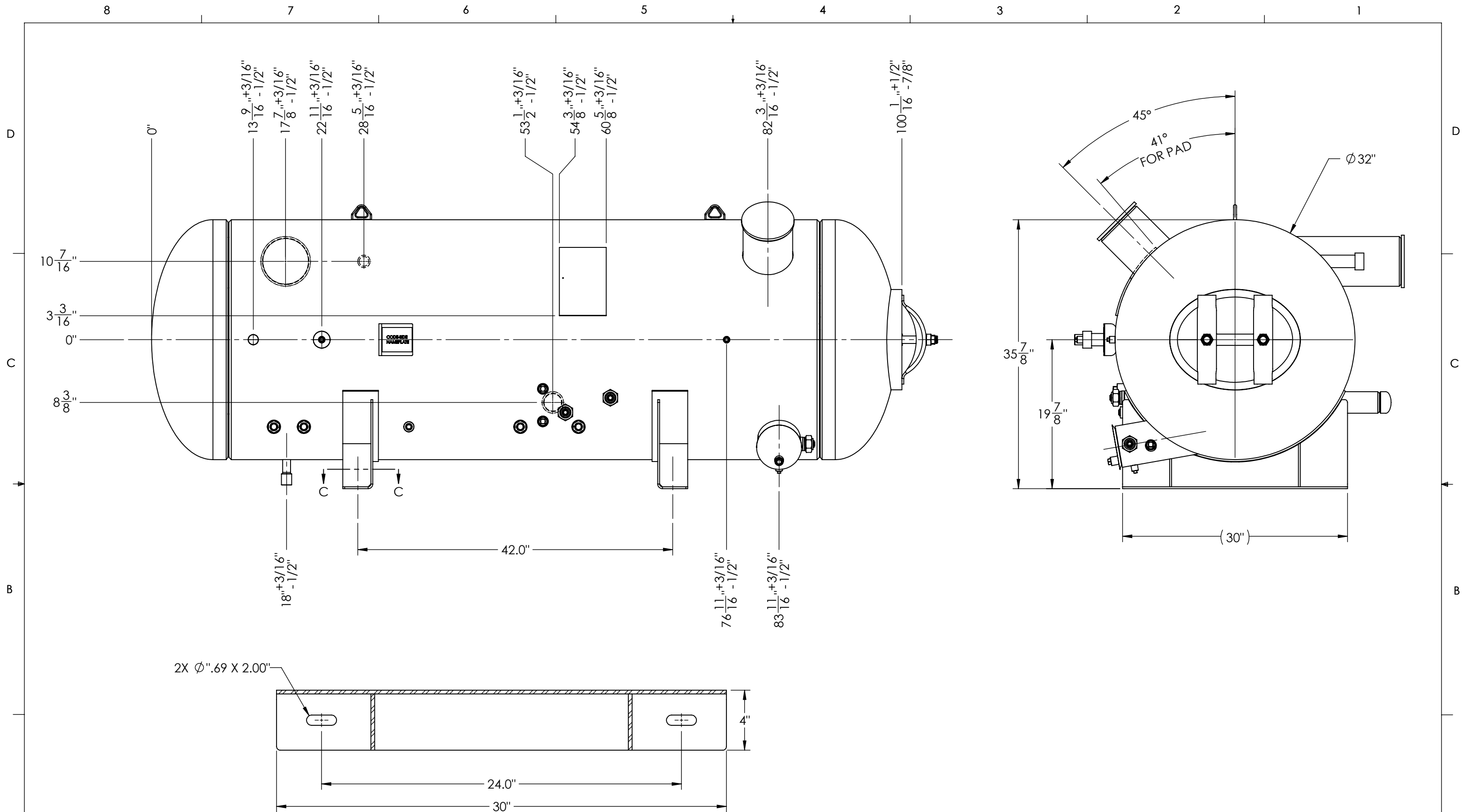
PROPRIETARY AND CONFIDENTIAL
 THE INFORMATION CONTAINED
 IN THIS DRAWING IS THE SOLE
 PROPERTY OF BITZER. ANY
 REPRODUCTION IN PART OR AS
 WHOLE WITHOUT THE WRITTEN
 PERMISSION OF BITZER IS
 PROHIBITED.

BITZER BITZER U.S. Inc.
 4080 ENTERPRISE WAY
 FLOWERY BRANCH, GA 30542

TITLE: **SUBMITTAL DRAWING**

SIZE: **B** JOB#: Pressure Vessels DWG NO: OAH80051AUS-Z2 REV: **05**

DRAWN: AC DATE: 04/09/2019 SCALE: 1:16 WEIGHT: 2907.52LBS SHEET: 1 OF 2



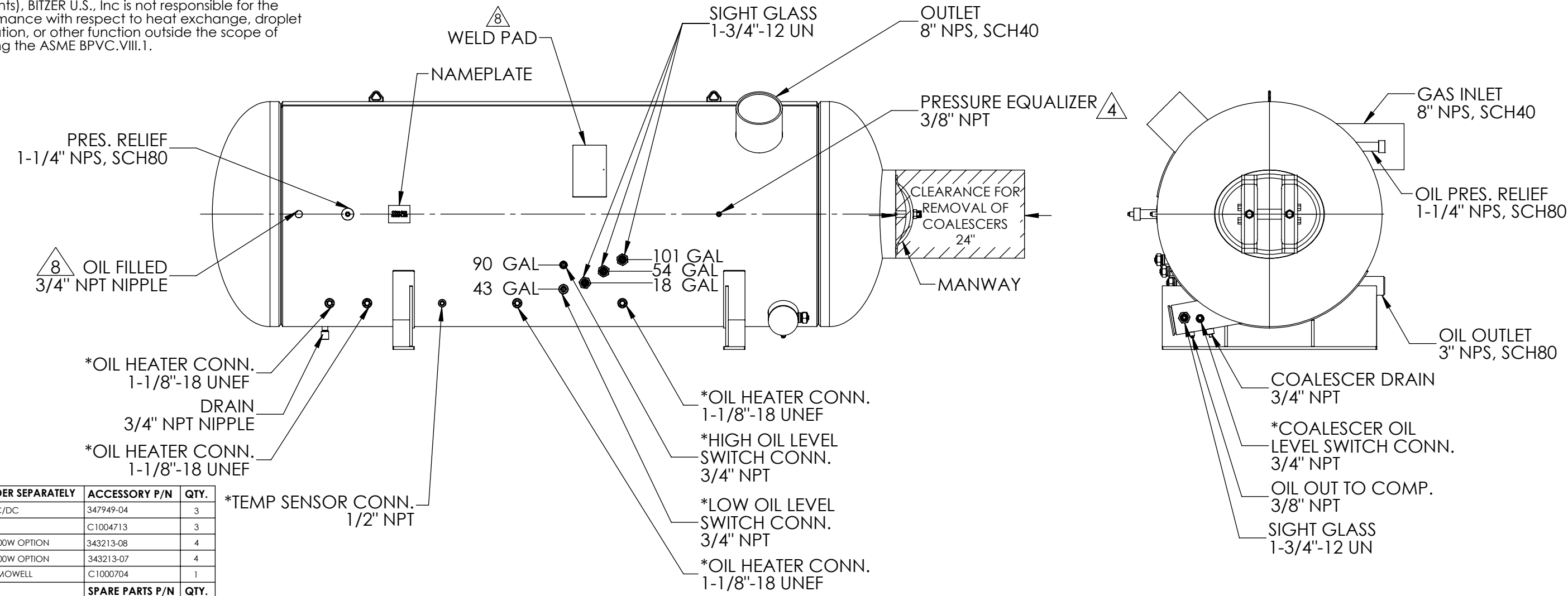
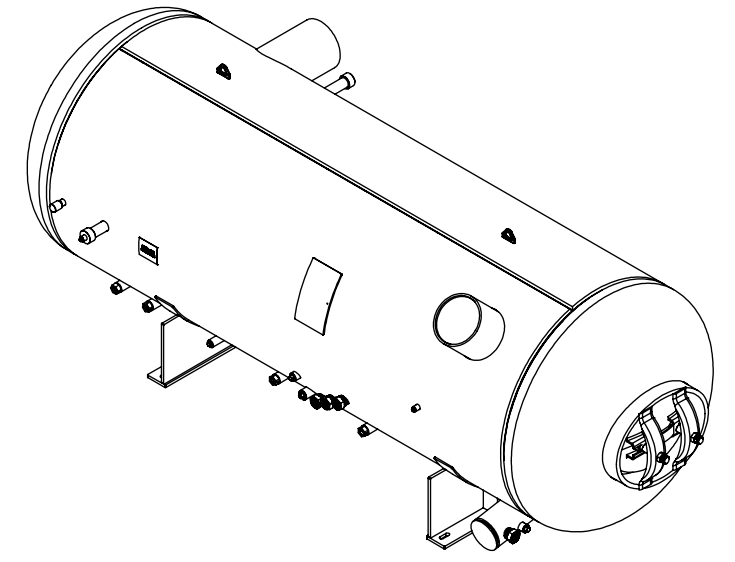
SECTION C-C
SCALE 1 : 6

UNLESS OTHERWISE SPECIFIED DIM ARE IN INCHES ANGLE TOL $\pm 2^{\circ}30'$ FRACTION TOL $\pm 1/4$ $.X \pm .125$ $.XX \pm .063$ $.XXX \pm .005$ ASME Y14.5M-1994		PROPRIETARY AND CONFIDENTIAL THE INFORMATION CONTAINED IN THIS DRAWING IS THE SOLE PROPERTY OF BITZER. ANY REPRODUCTION IN PART OR AS WHOLE WITHOUT THE WRITTEN PERMISSION OF BITZER IS PROHIBITED.		BITZER U.S. Inc. 4080 ENTERPRISE WAY FLOWERY BRANCH, GA 30542	
				TITLE SUBMITTAL DRAWING	
THIRD ANGLE PROJECTION 		SIZE B	JOB# Pressure Vessels	DWG NO OAH80051AUS-Z2	REV 05
DRAWN AC	DATE 04/09/2019	SCALE 1:12	WEIGHT 2907.52LBS	SHEET 2 OF 2	

Approval: _____
Customer Signature Required Upon Order

Customer Company Name: _____

1. Shell Side:
 - Max. Allowable Work Pressure: 300psi @ 250F
 - Min. Design Metal Temp.: -20F @ 300psi
 - Capacity: 90.06 ft3
 - Corrosion Allowance: 0
 - Vessel Stamp: U
2. Manufacture vessel in accordance with ASME BPVC.VIII.1 (Latest Version)
3. Pressure boundary parts are carbon steel.
4. All connections will be shipped with welded caps and plugs.
5. Vessel will be painted black.
6. Customer must remove all welded caps prior to pressurizing system.
7. Vessel not constructed or stamped for "lethal" service.
8. Vessel has hot formed heads in compliance with ANSI/IIAR 2. (Not applicable if primary fluid is oil).
9. For custom vessels, (customer provided internal design elements), BITZER U.S., Inc is not responsible for the performance with respect to heat exchange, droplet separation, or other function outside the scope of meeting the ASME BPVC.VIII.1.



(*) ACCESSORY - ORDER SEPARATELY	ACCESSORY P/N	QTY.
OIL LEVEL SWITCH - 24V, AC/DC	347949-04	3
OIL LEVEL SWITCH PRISM	C1004713	3
OIL LEVEL HEATER - 120V, 200W OPTION	343213-08	4
OIL LEVEL HEATER - 230V, 200W OPTION	343213-07	4
TEMPERATUR SENSOR THERMOWELL	C1000704	1
SPARE PARTS	SPARE PARTS P/N	QTY.
COALESCER	P000009451	4
HEATER WELL	345905-05	4
O-RING - HEATER TO HEATER WELL	372021-14	4
O-RING - HEATER WELL TO COUPLING	372021-20	4
SET SCREWS - HEATER WELL	380354-08	8
MANWAY GASKET	P000014996	1
MANWAY LOCKNUT	P000011380	2
SIGHT GLASS	182102200	4
SIGHT GLASS NUT	182102015	4
O-RING - SIGHT GLASS ROTALOCK SEAL	372200-04	4

REVISION HISTORY				
REV	DESCRIPTION	DATE	DRWBY	APPVBY
10	PROJECTION OF MNWY CHANGED TO 127.5"	01/27/2026	EGL	EGL
09	UPDATED GASKET PART NUMBER	08/31/2023	EGL	AHB
08	PRJCTN OF OIL FILL RD CD TO 1.5"/WELD PAD	04/11/2022	AHB	AHB
07	DIM CHANGE FROM 73.75 TO 67.25 REPLACED GASKET	10/29/2019	ED	ED
06	REPLACED P-9803 WITH P-9451	08/23/2019	ED	ED
05	UPDATE NAMEPLATE	08/19/2019	AC	AC

UNLESS OTHERWISE SPECIFIED
DIM ARE IN INCHES
ANGLE TOL ± 2°30'
FRACTION TOL ± 1/4
.X ± .125 .XX ± .063 .XXX ± .005
ASME Y14.5M-1994

THIRD ANGLE PROJECTION

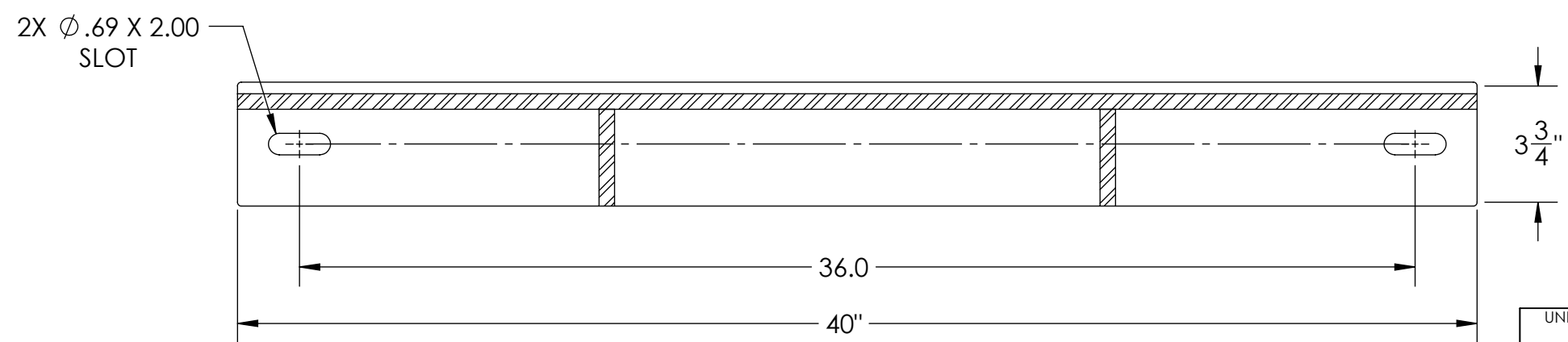
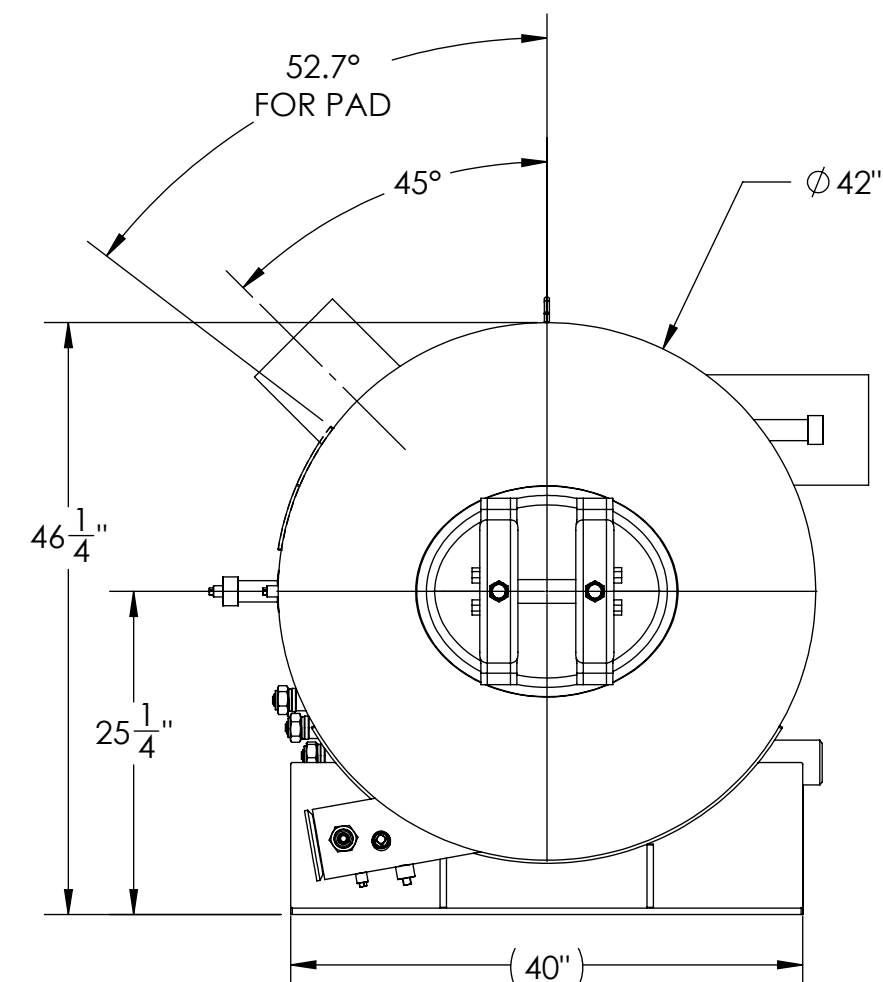
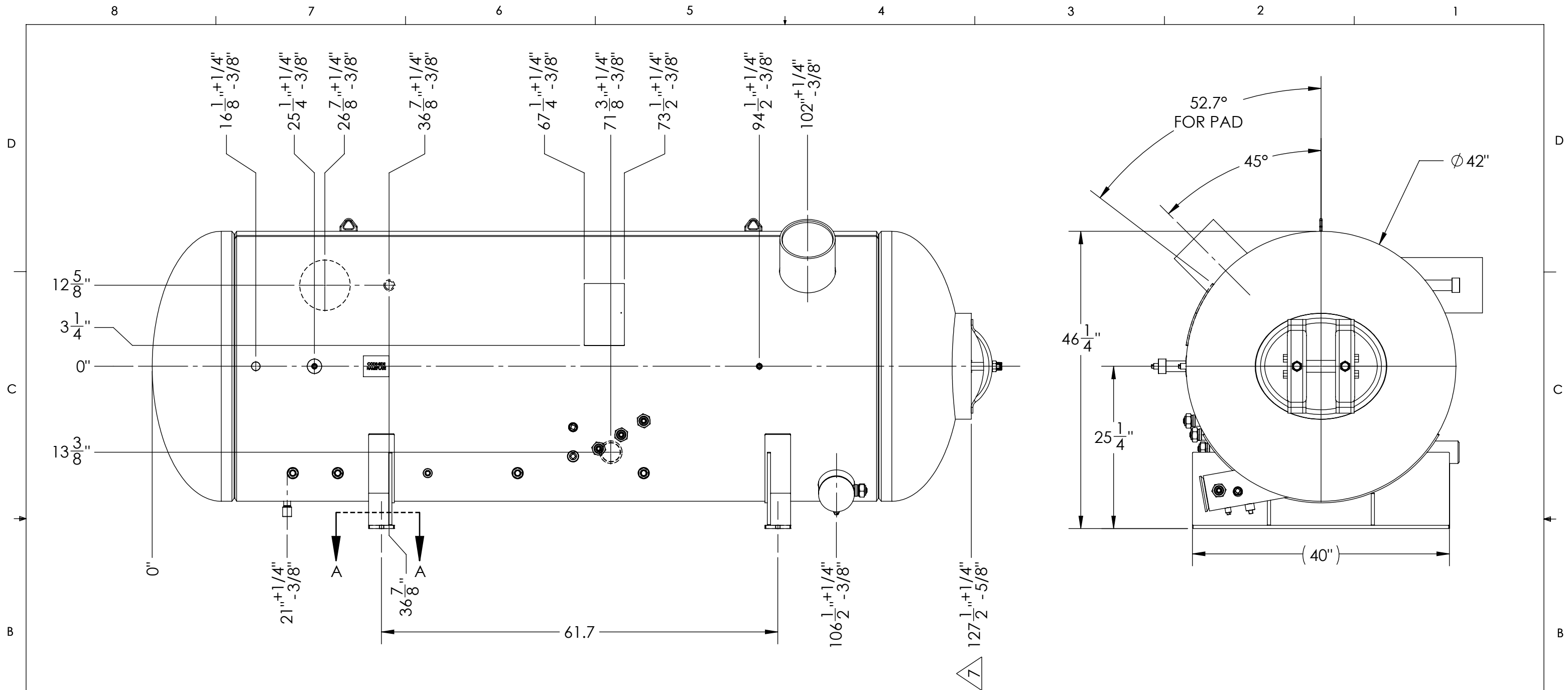
PROPRIETARY AND CONFIDENTIAL
THE INFORMATION CONTAINED
IN THIS DRAWING IS THE SOLE
PROPERTY OF BITZER. ANY
REPRODUCTION IN PART OR AS
WHOLE WITHOUT THE WRITTEN
PERMISSION OF BITZER IS
PROHIBITED.

BITZER U.S. Inc.
4080 ENTERPRISE WAY
FLOWERY BRANCH, GA 30542


BITZER

TITLE
SUBMITTAL DRAWING

SIZE B JOB# DWG NO OAH100051AUS-Z2 REV 10
DRAWN DRE 04/23/2019 SCALE 1:20 WEIGHT 5517.56LBS SHEET 1 OF 2



SECTION A-A
SCALE 1 : 5

UNLESS OTHERWISE SPECIFIED DIM ARE IN INCHES ANGLE TOL $\pm 2^{\circ}30'$ FRACTION TOL $\pm 1/4$.X $\pm .125$.XX $\pm .063$.XXX $\pm .005$ ASME Y14.5M-1994		PROPRIETARY AND CONFIDENTIAL THE INFORMATION CONTAINED IN THIS DRAWING IS THE SOLE PROPERTY OF BITZER. ANY REPRODUCTION IN PART OR AS WHOLE WITHOUT THE WRITTEN PERMISSION OF BITZER IS PROHIBITED.		 BITZER U.S. Inc. 4080 ENTERPRISE WAY FLOWERY BRANCH, GA 30542	
THIRD ANGLE PROJECTION		TITLE SUBMITTAL DRAWING		SIZE B	JOB#
DRAWN	DRE	DATE	SCALE	DWG NO	REV
		04/23/2019	1:15	OAH100051AUS-Z2	10
			WEIGHT	SHEET	
			5517.56LBS	2 OF 2	